

I CERTIFY THAT THIS PLAN NO. 58M-600 IS REGISTERED IN THE LAND REGISTRY OFFICE FOR THE LAND TITLES DIVISION OF WATERLOO (NO. 58) AT 10:43 O'CLOCK ON THE 10th DAY OF MAY, 2017. AND ENTERED IN THE PARCEL REGISTER FOR P.L.N. 22684-5028 (LT) AND REQUIRED CONSENTS ARE REGISTERED AS PLAN DOCUMENT NO. WR 19 310399.

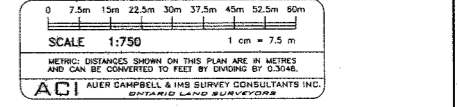
S. Simpson REPRESENTATIVE FOR LAND REGISTRAR

THIS PLAN COMPRISES PART OF P.L.N. 22684-5028 (LT) TOTAL AREA OF LANDS TO BE SUBDIVIDED - 9,9519 Ha.

APPROVED UNDER SECTION 51(58) OF THE PLANNING ACT, R.S.O. 1990, C. P.13, AS AMENDED, BY THE COUNCIL OF THE REGIONAL MUNICIPALITY OF WATERLOO.

THIS 10th DAY OF MAY 2017. MICHELLE SERBI, M.C.I.P., R.P.P. DIRECTOR, COMMUNITY PLANNING

PLAN OF SUBDIVISION SHOWING PART OF LOT 42 GERMAN COMPANY TRACT AND ALL OF BLOCKS 109 AND 110 REGISTERED PLAN NO. 58M-548 CITY OF WATERLOO REGIONAL MUNICIPALITY OF WATERLOO



- NOTES: 1 - DIMENSIONS SHOWN ARE PLAN 58M-548 AND MEASURED UNLESS ANOTHER SOURCE IS SHOWN. 2 - ORIGIN OF MONUMENTS ACI UNLESS OTHERWISE NOTED. 3 - BEARINGS ARE GRID BEARINGS AND ARE REFERRED TO THE SOUTHERLY LIMIT OF PART 3, PLAN 58M-17469, HAVING A BEARING OF N63°53'45"E.

Table with 4 columns: POINT ID, NORTHING, EASTING, ELEVATION. Lists observed reference points with their coordinates.

GRID SCALE CONVERSION: DISTANCES ARE GROUND AND CAN BE CONVERTED TO GRID BY MULTIPLYING BY THE COMBINED SCALE FACTOR OF 0.9995544. COORDINATES CANNOT, IN THEMSELVES, BE USED TO RE-ESTABLISH CORNERS OR BOUNDARIES SHOWN ON THIS PLAN.

OWNER'S CERTIFICATE

I CERTIFY THAT: 1. LOTS 1 TO 144, BOTH INCLUSIVE THE BLOCKS, NAMELY BLOCKS 145, 146, 147, 148, 149 AND 150, THE RESERVE, NAMELY BLOCK 154 AND THE STREETS NAMELY BEECHDROPS DRIVE, CINNAMON FERN STREET, TWINLEAF STREET, LADYSLIPPER DRIVE AND MOUNTAIN HOLLY COURT AND LANES, NAMELY BLOCKS 151, 152 & 153 HAVE BEEN LAID OUT IN ACCORDANCE WITH MY INSTRUCTIONS. 2. THE LANES, NAMELY BLOCKS 151, 152 AND 153 AND THE STREETS NAMELY BEECHDROPS DRIVE, CINNAMON FERN STREET, TWINLEAF STREET, LADYSLIPPER DRIVE AND MOUNTAIN HOLLY COURT ARE HEREBY DEDICATED AS PUBLIC HIGHWAYS TO THE CORPORATION OF THE CITY OF WATERLOO.

DATED AT KITCHENER MARCH 21, 2017. BEVERLY LYNN GIES, C.E.O. WM. J. GIES CONSTRUCTION LIMITED I HAVE AUTHORITY TO BIND THE CORPORATION

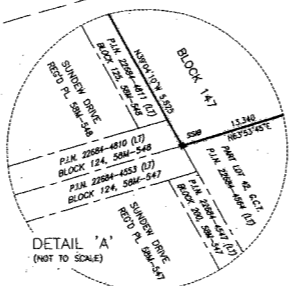
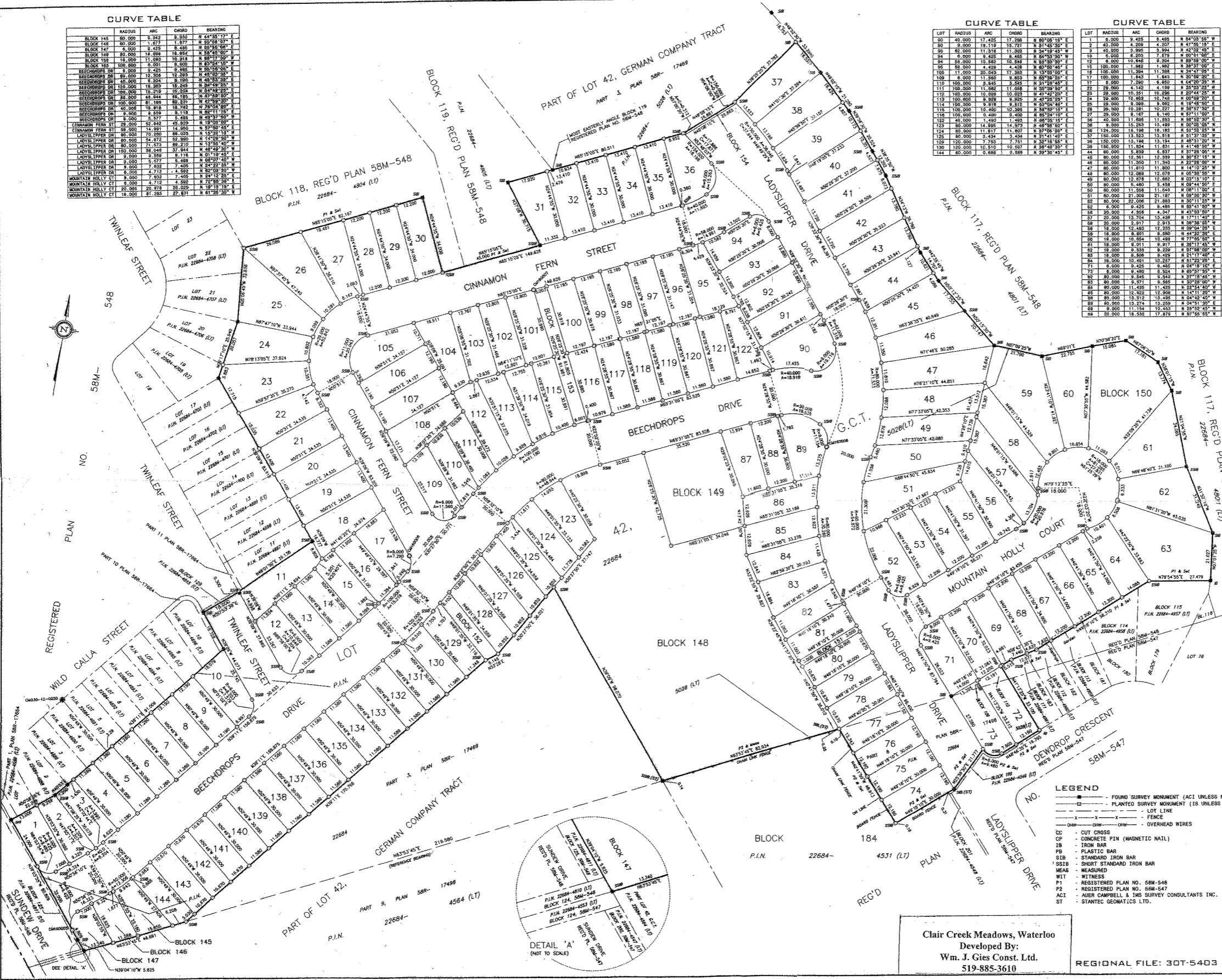
SURVEYOR'S CERTIFICATE

I CERTIFY THAT: 1. THIS SURVEY AND PLAN ARE CORRECT AND IN ACCORDANCE WITH THE SURVEYORS ACT, THE SURVEYORS ACT AND THE LAND TITLES ACT AND THE REGULATIONS MADE UNDER THEM. 2. THE SURVEY WAS COMPLETED ON FEBRUARY 28, 2017. DATED AT KITCHENER MARCH 21, 2017. THEODORE H. IMS, OLS AUER CAMPBELL & IMS SURVEY CONSULTANTS INC.

ACI SURVEY CONSULTANTS ONTARIO LAND SURVEYORS. 582 FREDERICK ST. KITCHENER, ON. T: 519-578-2220 F: 519-578-8044. DATE: 2017-03-20 SUBDIVISION: REGIONAL FILE NUMBER: MAT-GCI-42-16791

CURVE TABLE with columns: BLOCK, RADIUS, ARC, CHORD, BEARING. Lists curve data for blocks 145 through 148.

CURVE TABLE with columns: LOT, RADIUS, ARC, CHORD, BEARING. Lists curve data for lots 1 through 144.



Clair Creek Meadows, Waterloo Developed By: Wm. J. Gies Const. Ltd. 519-885-3610 REGIONAL FILE: 30T-5403

- LEGEND: FOUND SURVEY MONUMENT (ACI UNLESS NOTED), PLANTED SURVEY MONUMENT (IB UNLESS NOTED), LOT LINE, FENCE, OVERHEAD WIRES, CUT CROSS, CONCRETE PIN (MAGNETIC NAIL), IRON BAR, PLASTIC BAR, STANDARD IRON BAR, SHORT STANDARD IRON BAR, MEASURED, WITNESS, REGISTERED PLAN NO. 58M-548, REGISTERED PLAN NO. 58M-547, AUER CAMPBELL & IMS SURVEY CONSULTANTS INC., STANTIC GEOMATICS LTD.